

DSSPlayer Pro R5.0.12

Release Notes

OLYMPUS IMAGING AMERICA INC.
Audio Group

Table of Contents

■ 1 Introduction.....	2
■ 2 SCP Control Options Tabs View in DM/TM (DM/TM/SCP).....	2
◆ 2.1 Overview.....	2
◆ 2.2 Specification.....	2
2.2.1 How to Enable/Hide each tab.....	2
2.2.2 Effect of hiding a tab in the R5.0.12 DM/TM.....	3
2.2.3 [User Settings] and [Device] tab Exceptions.....	4
■ 3 Notification Popup (TM).....	5
■ 4 DM “Do not display the main window” (DM/SCP).....	6
■ 5 Default focus position on Edit Job Data (DM/TM).....	7
■ 6 Added “Change Status” to Context Menu (DM).....	8
■ 7 Added “Delete” button on Address Book dialog (DM/TM).....	8
■ 8 Notification Function Audio Output Device Selection(TM).....	9
■ 9 Automatic Sending after Hands-Free Direct Recording (DM).....	9
■ 10 Worktype ID and Option Items on Edit Job Data (DM/TM).....	11
■ 11 Appendix: Summary of Bug Fixes and Improvement.....	13

■ 1 Introduction

This release notes document describes the improvement in DSS Player Pro R5.0.12.

■ 2 SCP Control Options Tabs View in DM/TM (DM/TM/SCP)

◆2.1 Overview

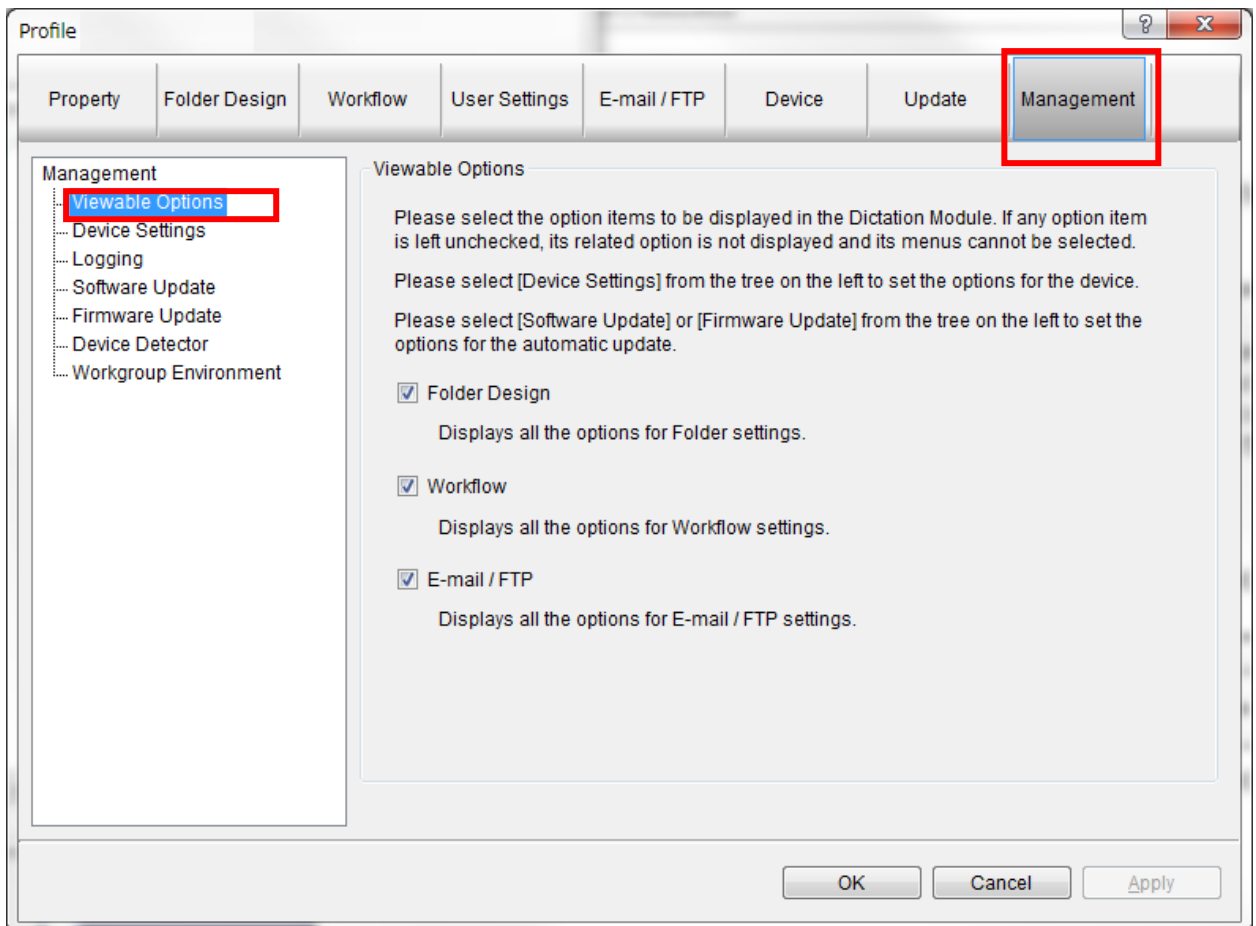
In order to provide better administrative control of R5 applications, R5.0.12 introduces a new Viewable Options in SCP R5.0.12. This added functionality enables the administrator to enable/disable configuration tabs in the DM/TM applications as shown in the picture below.

Administrator can easily control whether the DM/TM user can make changes in the application settings by providing access or denying it for that matter from the user profile using SCP. Thus providing a more secure and simplified user environment for the end user.

◆2.2 Specification

2.2.1 How to Enable/Hide each tab

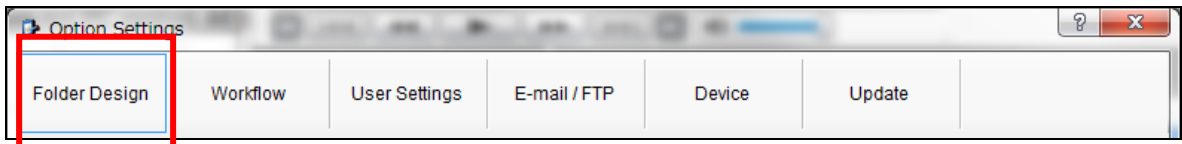
The [Viewable Options] node is added in [Management] tab as shown below.



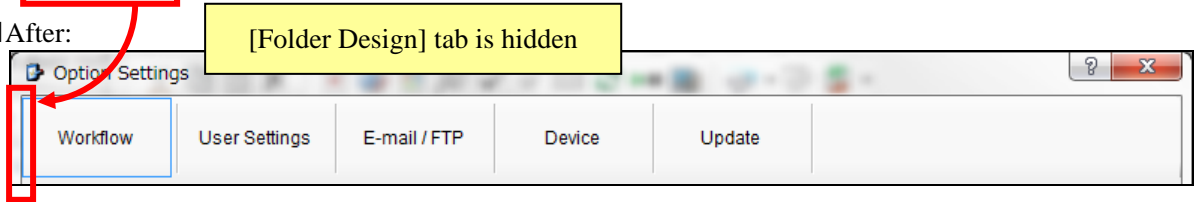
The [Viewable Options] has 3 check boxes. When an administrator needs to deny access to the [Folder Design] tab by the user, it can easily be done by unchecking [Folder Design].

The effective result in this example will be, the DM [Folder Design] tab will be removed from the Options tabs.

■ Before:



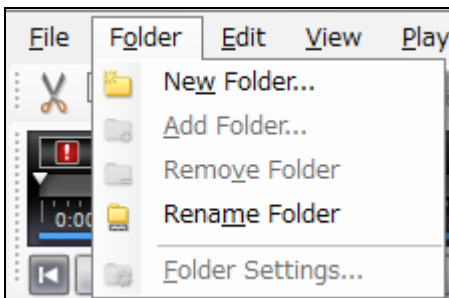
■ After:



2.2.2 Effect of hiding a tab in the R5.0.12 DM/TM

When a tab is hidden, related menu items and functions available in the hidden tab will be disabled and any link to these functions will be removed.

As an example, when the [Folder Design] tab is hidden, the [Folder Settings] menu is grayed out automatically in the Folder menu to prevent backdoor access to hidden functionality.



However, you can see [New Folder] and [Rename Folder] option available in this example. This is by design and due to the fact that some application personalization such as adding a folder or renaming a folder is considered personal setting. So [New Folder] / [Add Folder] / [Remove Folder] / [Rename Folder] menus are not affected when the [Folder Design] tab is hidden.

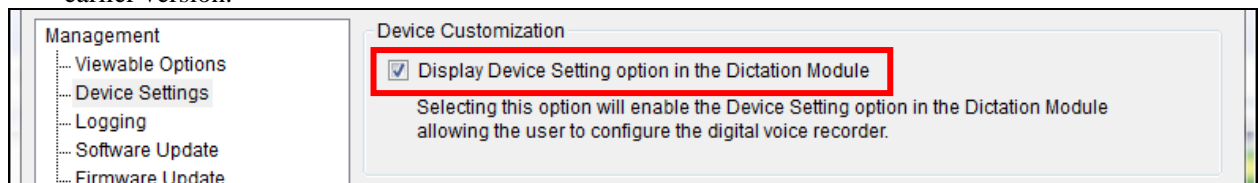
Similarly, there are many other related menus and controls that will be removed or disabled when tabs are hidden from the end user. Please see the table below for explanation about the effect of hiding a tab:

Viewable Option	Related controls
Folder Design	<ol style="list-style-type: none"> [Folder] – [Folder Settings] menu. Please note that [New] / [Add] / [Remove] / [Rename] menus are not affected by design. [Folder Settings] button on Folder Tree View. <div data-bbox="525 1675 960 1839" data-label="Image"> </div> Folder Properties: Name and some unchangeable options only are shown as below:

	 <p>4. In Workflow Option Dialog (DM/TM) [Workflow] – [Auto Classification] “Link Label” [Workflow] – [Receive] “Link Label” Link Label disabled/removed: Encryption Setting Add/Remove supported document type</p> <p>5. In Workflow Option Dialog (TM) [Workflow] – [Notification] “Link Label” Link Label disabled/removed: Set notification folder</p>
Workflow	<p>1. In Direct Recording Window (DM Only) [User Settings] – [Direct Recording Window]</p> <p>2. In Option Dialog (DM Only) [Device(DS-5000/5000iD, 3400)] – [Author List] “Link Label” [Device(DS-5000/5000iD, 3400)] – [Worktype List] “Link Label” Link Label disabled/removed: Author of Workflow Worktype of Workflow</p>
Email/FTP	<p>1. In Option Dialog (DM Only) [Update] – [Dictation Module] “Link Label” [Update] – [Device Firmware] “Link Label” Link Label disabled/removed: Proxy settings</p> <p>2. In Option Dialog (TM Only) [Update] – [Transcription Module] Link Label disabled/removed: Proxy settings</p> <p>3. When the Email/FTP tab is hidden, all prompts messages to create email/ftp profile will not appear.</p>

2.2.3 [User Settings] and [Device] tab Exceptions

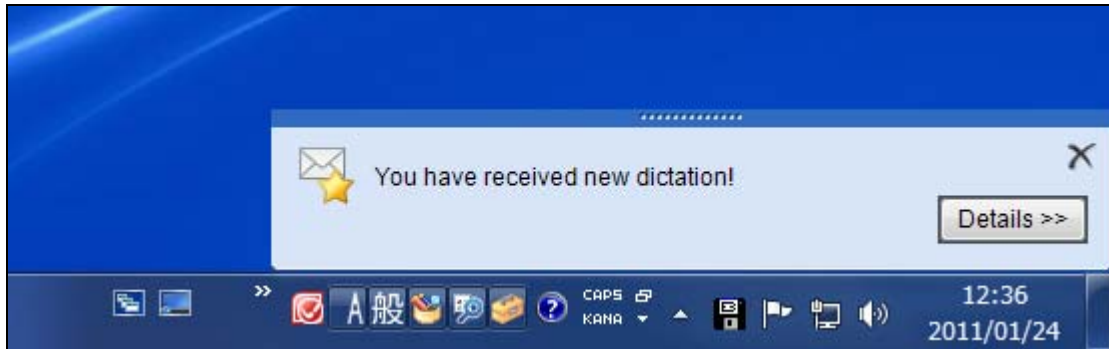
- [User Settings] tab cannot be hidden from the end user by the administrator.
- [Device] tab enable/hide option can be found in the [Device Settings] node. Same place it was in earlier version.



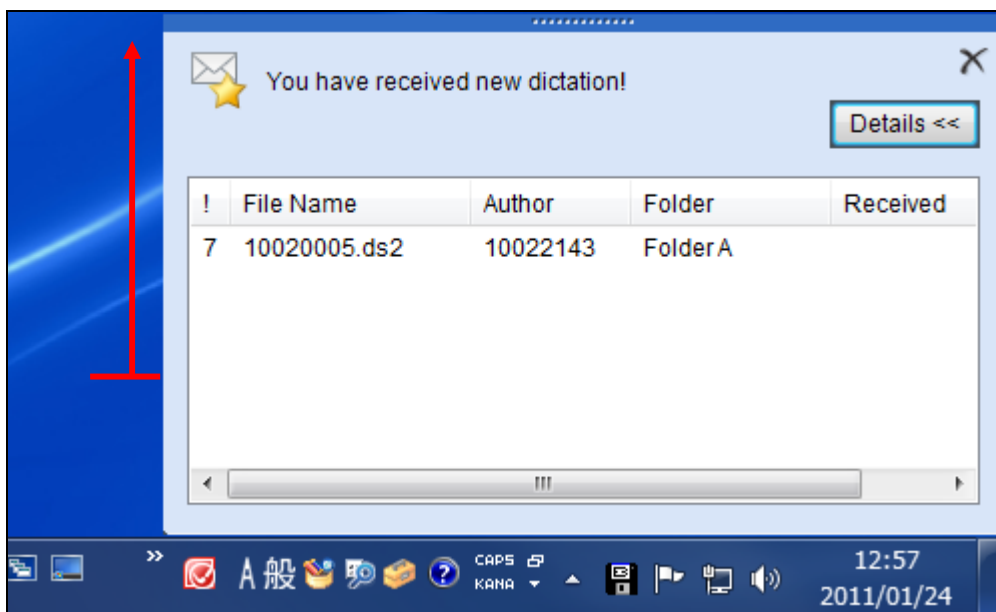
■ 3 Notification Popup (TM)

In R5.0.11 or earlier versions, system focus on the PC is taken away by the notification popup whenever it appears. Due to interruption it might cause to transcriptionist while typing, the notification dialog have been modified to continue to pop up on top but not take focus away from the application in focus.

Also, in R5.0.11 and earlier releases, the pop up dialog always appears at the center of the screen which blocked the transcriptionist view of the current application. In R5.0.12, the notification dialog has been designed to appear in the bottom right hand corner of the screen as shown below.

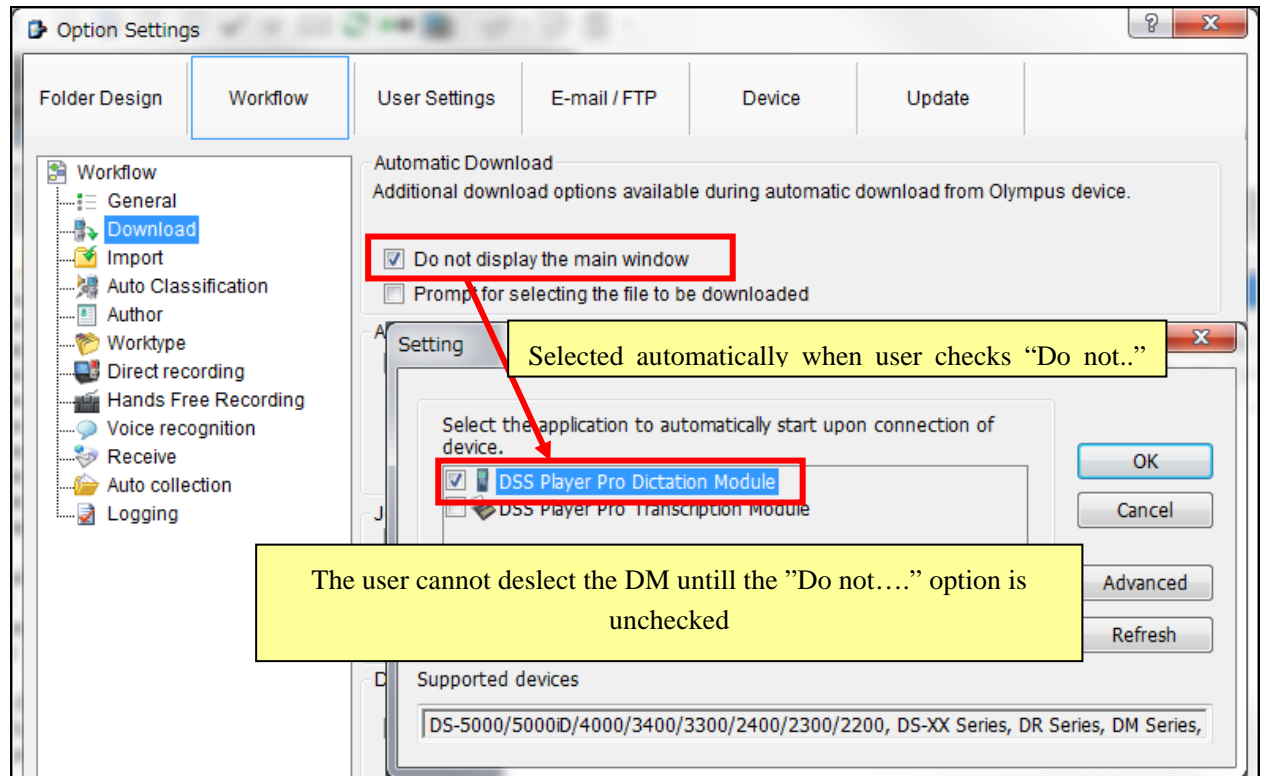


When the user clicks the [Details] button, the notification dialog will reposition itself upwardly in order to show the file list without having the user move the dialog.



■ 4 DM “Do not display the main window” (DM/SCP)

When “Do not display the main window” is checked in the DM and DD4 is set not to launch any software module, user become unaware that the download did not take place when docking the recorder. As a fail safe mechanism to protect against this scenario, when “Do not display the main window” is checked on DM or SCP author’s property dialog, DD4 will be automatically set to launch DM. Moreover, user will be unable to deslect DSS Player Pro Dictatoin Module in the DD4 Setting unless the “Do not display the main window” is unchecked first.

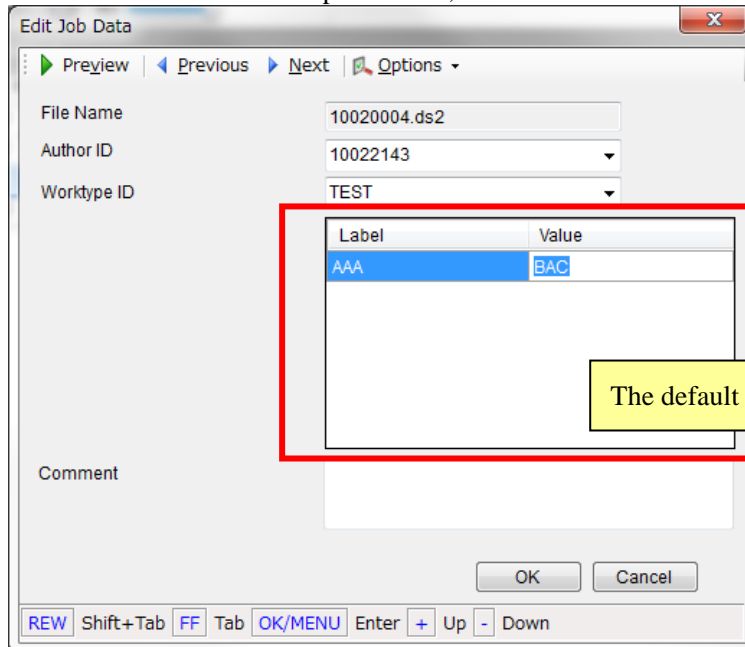


■ 5 Default focus position on Edit Job Data (DM/TM)

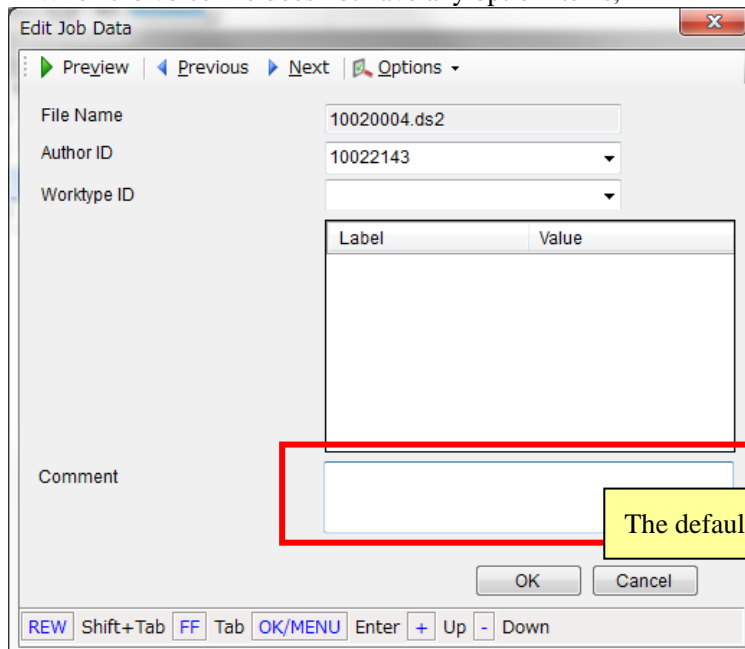
The default focus position of Edit Job Data dialog has been modified in R5.012 as follows:

When the voice file has one or more option items, the default focus is set on the first option item. However, when it does not have any option item, the default focus position is “Comment”.

■ When the voice file has option items,

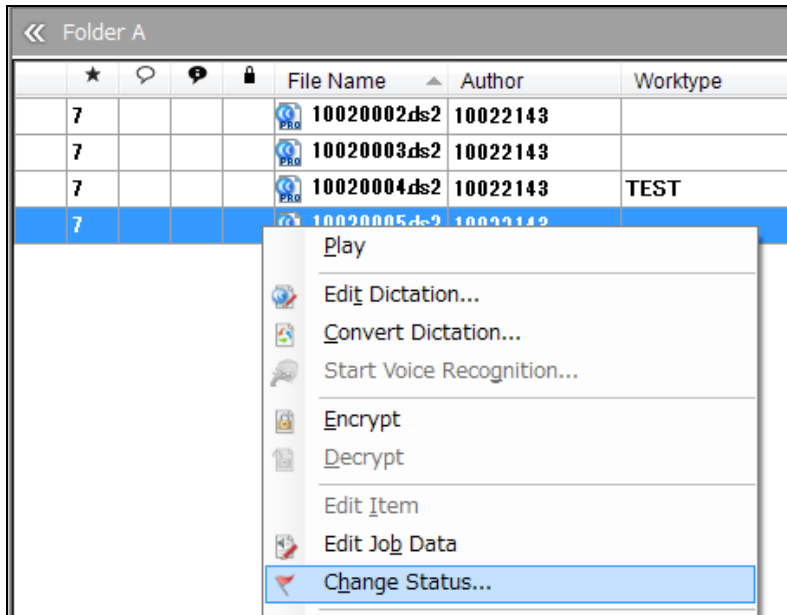


■ When the voice file does not have any option items,



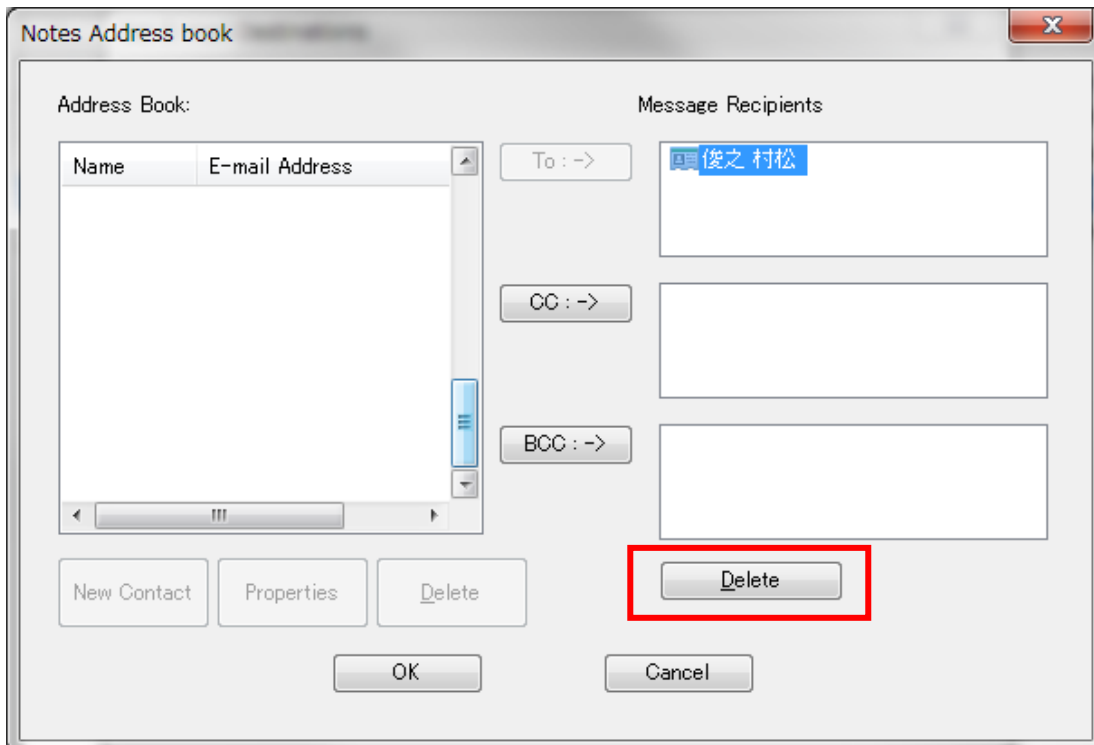
■ 6 Added “Change Status” to Context Menu (DM)

[Change Status] option is added on the context of menu of DM.



■ 7 Added “Delete” button on Address Book dialog (DM/TM)

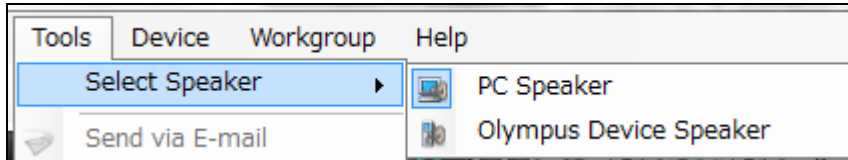
New [Delete] button has been added to the DM/TM address book.



■ 8 Notification Function Audio Output Device Selection(TM)

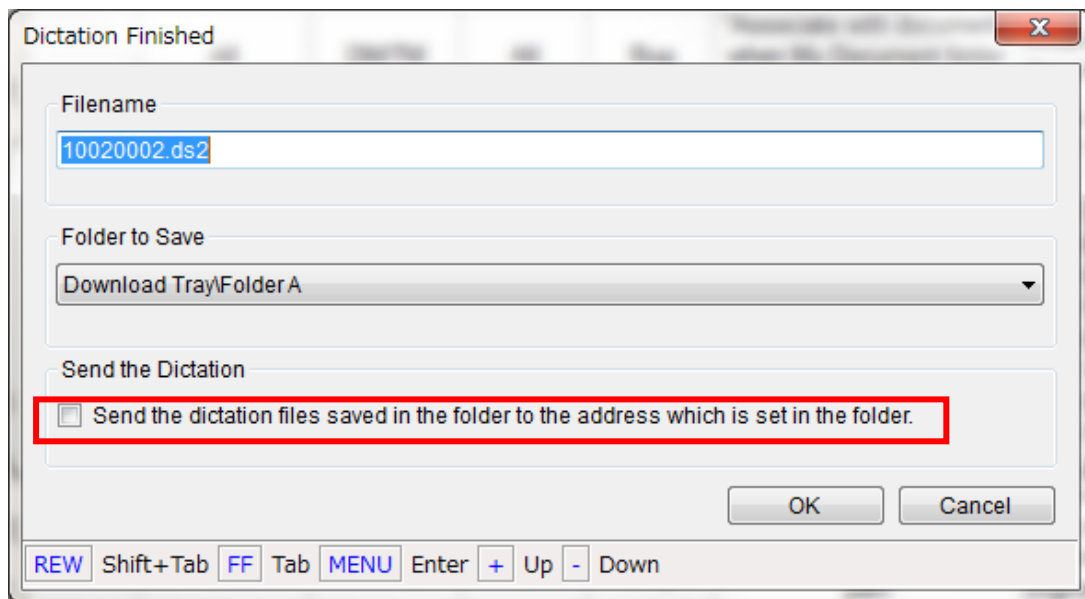
In earlier versions, the audible notification function in the TM was set to playback by default through the system default sound device. However, audio files playback device was set according to the setting in the TM. So it is possible that notification and audio playback in the TM take place at different sound device causing the user not to hear the notification when it happens.

In R5.0.12, the notification sounds device and audio playback of sound device will be the same and configured using the selection made in the TM [Select Speaker] feature.

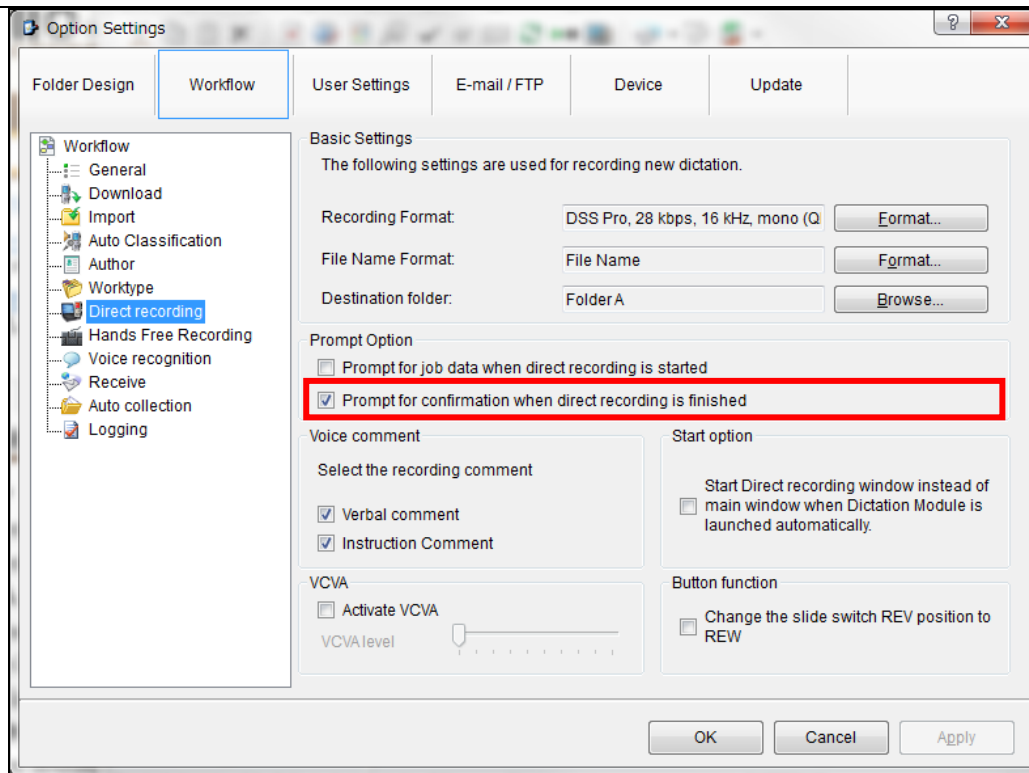


■ 9 Automatic Sending after Hands-Free Direct Recording (DM)

Since introducing Hands Free Recording in R5.0.11 using foot switch, the ability to automatically send the recorded audio via email was not possible in such environment. Even though the destination folder Actions has automatic email/FTP enabled, the hands free recorded files are NOT sent unless the user select the checkbox to confirm sending the dictation.



However, in hands free environment, it is not possible to maneuver using the foot pedal to make the selection. Additionally, the Dictation Finished dialog appears only if the “Prompt for confirmation ...” option on [Workflow] tab is selected as shown below:

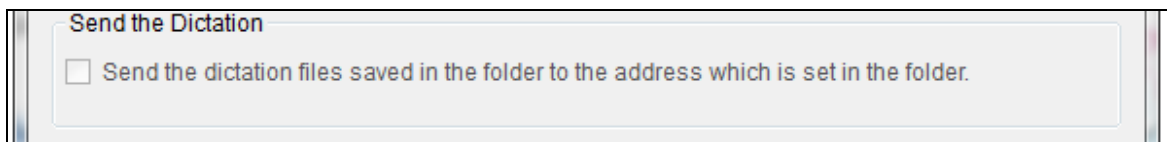


- **R5.0.12 “Prompt for confirmation....” Not Checked:**

In this situation, the destination folder email/FTP settings will take effect and the dictation file will be handled according to the email/FTP settings of the destination folder.

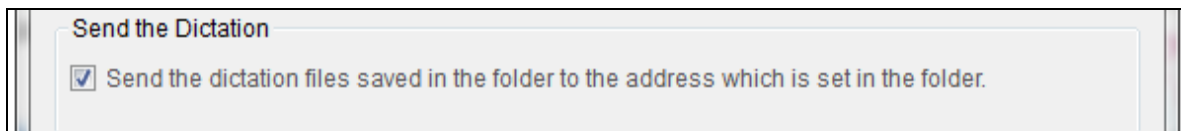
- **R5.0.12 “Prompt for confirmation....” Checked:**

In this situation, the Dictation Finished dialog appears and the user can choose to send the dictation file by checking/unchecking the “Send the Dictation” box. If unchecked, the dictation file will not be sent regardless of the destination folder email/FTP settings.



When checked and Active, the dictation file will be sent according to the email/FTP settings of the destination folder email/FTP settings.

Note: The “Send the Dictation” checkbox is only active when the auto sending option of the destination folder is active.



The default value of “Send the dictation” is always “Checked” and the DM does not remember its previous status.

10 Worktype ID and Option Items on Edit Job Data (DM/TM)

In R5.0.11, the Edit Job Data dialog clears all the options items when the user change the worktype or toggle back and forth to the same worktype.

Worktype ID

Label	Value
AAAA	1
BBBB	2

↓ ↓ ↓ ↓

Changing Worktype ID manually...

Worktype ID

Label	Value

When Worktype ID is changed, Option Items are cleared.

↓ ↓ ↓ ↓

In R5.0.11,

Worktype ID

Label	Value

When Worktype ID is rolled back, the Option Items should be rolled back. However, it did not.

↓ ↓ ↓ ↓

In R5.0.12,

Worktype ID

Label	Value
AAAA	1
BBBB	2

Option Items rolled back with the original values.

In the DM, the Edit Job Data dialog changes allows the retrieval of the original value and not the default value set in the Worktype ID configuration.

For example, suppose that DM Worktype ID configuration default values are AAAA and BBBB as shown below. However, the voice file has original values that are different than the default; those vaules will be rolled back.

The figure consists of three screenshots illustrating the 'Edit Job Data' dialog in DM. The top screenshot shows the 'Worktype ID' field set to 'TEST' and the 'Option item' table. The table has columns for 'Label', 'Default value', and 'Initial Value'. The 'Default value' column contains 'AAAA' and 'BBBB', and the 'Initial Value' column contains 'Default' for both. The middle screenshot shows the 'Worktype ID' dropdown menu set to 'TEST', with a table below it showing 'Label' and 'Value' for 'AAAA' (value 1) and 'BBBB' (value 2). The bottom screenshot shows the 'Option item' table with 'AAAA' selected. Red boxes and arrows highlight the relationship between the default values and the original values.

Label	Default value	Initial Value
<input checked="" type="checkbox"/> AAAA	AAAA	Default
<input checked="" type="checkbox"/> BBBB	BBBB	Default

Label	Value
AAAA	1
BBBB	2

Label	Default value	Initial Value
<input checked="" type="checkbox"/> AAAA	AAAA	Default

If the DM Option Item structure in the Worktype ID has changed, the original Option Items structure existed whe the file was created and the corresponding values will be rolled back.

■ 11 Appendix: Summary of Bug Fixes and Improvement

Module	Type	Title	Description
TM	Improved	System focus when Notification is pop-up	Modified the Notification pop up dialog to not take system focus from the current application in focus.
DM/TM/SCP	Improved	Control Option tab display in DM/TM by SCP	SCP functionality is enhanced to allow the administrator to control the DM/TM environment by selectively enabling/hiding Options tabs. In R5.0.11, "Device" tab was the only tab to support this functionality.
DD4/DM/SCP	Improved	"Do not display the main window" option in DM	When the "Do not display the main window" option is selected, the DD4 configuration is set automatically to launch DM. Once it is set, you cannot change the DD4 setting until you remove the check from "Do not..." option.
DM/TM	Improved	The default focus position on Edit Job Data	On launching Edit Job Data dialog, the focus is set on the Comment field when the file does not any option items configured.
DM	Improved	Add "Change Status"	Added "Change Status" menu on the context menu in DM
DM/TM	Improved	Add [Delete] Button on the Email addressing dialog	Added [Delete] Button on the Email address dialog.
DM/TM	Improved	How to assign notification sounds device	The Notification feature has been modified to use the audio device selected in the R5 application instead of the default sound device of the PC.
DM/TM	Improved	Offline feature	Expanded the offline feature to included non network folders. In previous versions, offline feature only apply for folders mapped to network locations. Therefore, folders mapped to a local or temporary drive were not supported by the offline feature.
DM	Improved	Default Mic in Direct Recording Window	The audio device (MIC) preference in the Direct Recording Window has been enhanced to remember the setting from the previous sessions instead of using the default MIC every time.
DM	Improved	Automatic Sending after Direct Recording	Direct Recording destination folder settings will be in effect in R5.0.12 on all direct recording files.
DM/TM	Bug	How to select default speaker	In R5.0.12, DM/TM checks the system default speaker when it selects the used speaker first time, and save the setting in the application preferences.

DM/TM	Bug	"Are you sure you want to delete the original files" message	Delete confirmation popup message "Are you sure you want to delete the original files?" sometimes display behind other application window. But the user does not recognize that and assume the DM/TM not responding.
DM/TM	Bug	"document association" when My Document folder is hidden	When "My Document" folder is hidden and the user attempt to associate a dictation with a document, an error appears.
DM/TM	Bug	Instruction comment in the encrypted file	When an encrypted dictation has an instruction comment, the instruction comment would not play unless the file is decrypted first.
DM/TM	Bug	FTP document retrieval	When DM/TM receives multiple files from a FTP server, sometimes certain file got skipped and left on the FTP server.
DM/TM	Bug	Files stay in the Outbox after sending	In some environment, DM sent the files via Outlook 2010, but the message stayed in the Outbox sending.
DM/TM	Bug	Remap the custom folder path	When users map the custom folder path to a sub folder of the original folder mapping, problem ensues.
DM/TM	Bug	Auto-Playback Option on Edit Job Data dialog	Edit Job Data dialog automatic playback option only works when the target voice file exists in the destination folder. I.e. did not work during downloading.
DM/TM	Bug	Crash after modifying comment field	Sometimes DM/TM crashed after modifying the comment field in the Edit Job Data dialog.
DM/TM	Bug	DM finished files won't move to finished folder	When the ownership property of a folder is available, and also the auto collection is available on the DM, all files in the folder should be moved into the folder where the author specified. However, it did not work in previous version.
DM/TM	Bug	Randomly Syncing	When DS-5000 is docks, sometimes it randomly disconnects and reconnects.
DM/TM	Bug	main window opens randomly	Sometimes DM/TM main window popped up automatically when it is minimized at the Taskbar.
DM/TM	Bug	DS-5000 randomly disconnect and reconnect	The DS-5000, when docked will randomly sync without any physical interaction from the user.
DM/TM	Bug	Option Item disabled on Edit Job Data dialog	Sometimes option item on the Edit Job Data was grayed out and user could not modify.
DM	Bug	Prohibit D&D to "SentItem"	Prohibit D&D any files to "SentItem". "SentItem" will only allow files that have been sent via email or FTP to reside in it.

DM	Bug	Recording folder	Prevent mapping the "Recording Folder" to a network location. "Recording Folder" is considered a system folder, so it should not be allowed to map to alternate location.
DM	Bug	Consumer models DVR settings	When DM is installed in Workgroup mode and modifies some configurations of Consumer model devices, the DM does not save the configuration once closed.
TM	Bug	Decryption Password	In previous versions, whenever a user toggle between Playback Control <-> Transcribe bar while playback an encrypted file, the user was required to enter the decryption password.
TM	Bug	Automatic sending for forwarded files	Forwarded voice files should be sent immediately once transferred to Outbox folder. However, in previous versions, these were handled same as documents and sent according to the "Send Interval" option.
TM	Bug	Combine files in Transcriptionist Tray	When you try to combine two files in Transcriptionist Tray, the TM shut down.
SCP	Bug	Apply the Group setting(1)	Sometimes a custom folder which is added to a users group was not applied to the group members.
SCP	Bug	Apply the Group setting(2)	Lock "OFF" modification in [Device Settings] -"DS-5000"- [Device Folders] was not applied to the members.
SCP	Bug	Apply the Group setting(3)	"Document Type" configuration of "Document Tray" was not applied to the members.
SCP	Bug	Apply the Group setting(4)	"Password" in [Device Settings] -"DS-5000"- [Device Folders] was not applied to the members.
SCP	Bug	Apply the Group setting(5)	A unique sequence of action in the group profile and member profile can result in the default author ID in the user profile being unselected. The scenario have been corrected to make sure default Author ID is always selected.
LM	Bug	When LM does not have registered license	When DM/TM, installed in Workgroup mode, connect to LM but LM has no registered site license, DM/TM fails to launch. However, if DM/TM cannot connect to LM, it launches in Trial mode. In R5.0.12, DM/TM launches in Trial Mode in both cases.
CitrixVD	Bug	Consume all CPU power	When a user disconnect instead of logging off from Citrix session, ServerVirtualDriver.exe consumes CPU power on the server.
CitrixVD TS VD	Bug	DD4	When users shut down TS or Citrix client window using [x] button instead of "Log Off", and login again, sometimes DD4 did not work properly.