

# DSSPlayer Pro R5.0.10

## Release Note

OLYMPUS IMAGING CORP.  
Audio R&D

### **Table of Contents**

<b>1 Introduction .....</b>	<b>3</b>
<b>2 Support New DS-5000 Functionality .....</b>	<b>3</b>
◆2.1 Splash message on start up.....	3
◆2.2 Disable SD card slot.....	3
<b>3 Improvement of FTP function (SFTP/FTPS) .....</b>	<b>4</b>
◆3.1 Overview .....	4
◆3.2 Support SFTP protocol.....	5
3.2.1 Support FTP server .....	5
3.2.2 SSH support version.....	5
3.2.3 SFTP support version.....	5
3.2.4 SSH authentication method.....	5
3.2.5 Options .....	5
◆3.3 Support FTPS protocol.....	6
◆3.4 Initial values .....	7
3.4.1 【DM/TM】 or 【SCP】user profile FTP function in R5.0.10.....	7
3.4.2 【DM/TM】or 【SCP】migration of existing FTP settings to R5.0.10.....	7
<b>4 Improvement of Folder customization in group profile .....</b>	<b>8</b>
<b>5 Improvement of group profile configuration update in SCP.....</b>	<b>8</b>
<b>6 Improvement of Device Customization in SCP .....</b>	<b>9</b>
◆6.1 Overview .....	9
◆6.2 Concept .....	9
◆6.3 Detailed behavior .....	9
6.3.1 Relation with locking option.....	9
◆6.4 Device Settings improvement .....	9
<b>7 License Manager Language Selection .....</b>	<b>13</b>

- **8 Encryption Support for TM Email/FTP Forward function..... 14**
- **9 Remove “Clean” option from “Download Tray” of TM ..... 14**
- **10 TM “Document Tray” Email/FTP Function Support ..... 15**
- **11 64bit Terminal Service Support..... 15**
- **12 Added “Cancel” Function to [Outbox]-[Email]/[FTP] Context Menu ..... 16**

## 1 Introduction

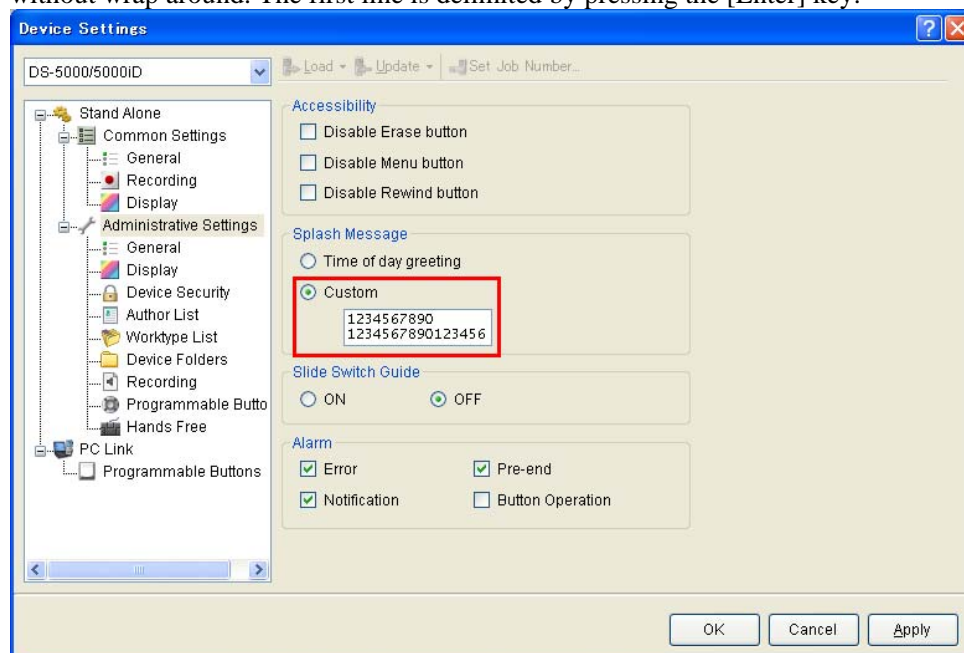
This document describes the improvements in DSS Player Pro R5.0.10 to support new DS-5000 features, added functionality based on requests submitted by our customers, or fixes for bugs or anomalies reported by our distributor, authorized dealers and customers.

## 2 Support New DS-5000 Functionality

Note To use these new features, you have to update the firmware of DS-5000 to version 1.060 or later.

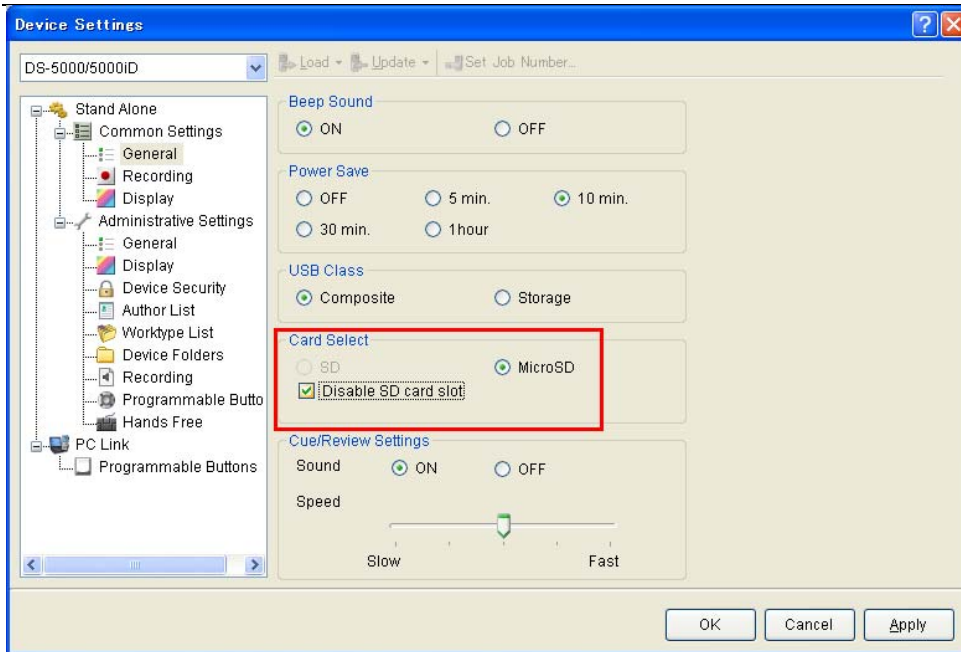
### ◆2.1 Splash message on start up

You can set a splash message on 2 lines with 16 characters per line. Each line can be entered separately without wrap around. The first line is delimited by pressing the [Enter] key.



### ◆2.2 Disable SD card slot

It is possible in R5.0.10 to program the DS-5000 or DS-5000ID to disable the SD card slot by selecting the checkbox as shown in the image below. Once the SD card slot is disabled on the recorder, the Micro SD card will be enabled by default. As a result of this new functionality, the recorder will be recognized by the Windows OS as one removable drive instead of 2 drives thus eliminating or reducing the chance of drive letter assignment conflict with existing network drive mapping on some PCs.



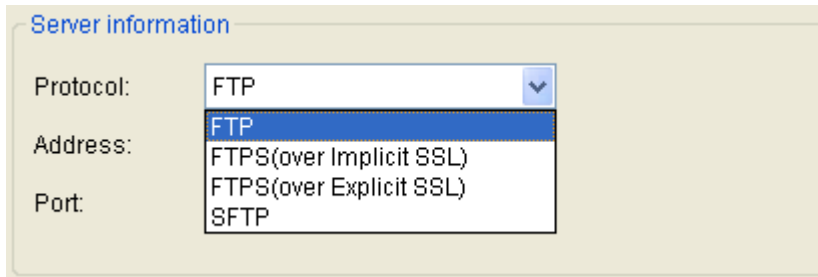
### ■ 3 Improvement of FTP function (SFTP/FTPS)

#### ◆3.1 Overview

In R5.0.10, FTP feature has been improved to support two major FTP protocols.

- ✓ Support SFTP (SSH File Transfer Protocol)
- ✓ Specify FTPS (FTP over SSL/TLS) connection mode

You can select the newly supported protocols from the Protocol list in “Server information”.



Since you can select “FTPS” from the pull down list, the redundant for SSL connection has been removed.

The table below shows the default port number of each protocol.

Protocol	Default Port	Active/Passive	Description
FTP	21	O	
FTPS	990	O	Common value between Implicit/Explicit mode
SFTP	22	X	

O : Enable  
X : Disable

#### ■ When you change the selection of that combo box:

- ✓ Enable/Disable of “Passive mode” will be changed according to the table above because SFTP does not have “Active/Passive” mode.

## ◆3.2 Support SFTP protocol

■Detail description about SSH File Transfer Protocol can be found online at many websites. For a quick review and definition of SSH you can visit the Wikipedia website by visiting the following link:

[http://en.wikipedia.org/wiki/SSH\\_file\\_transfer\\_protocol](http://en.wikipedia.org/wiki/SSH_file_transfer_protocol)

SFTP is a very popular secured FTP protocol. Therefore, supporting SFTP protocol in R5 DM/TM is very appealing to many users and adds versatility to the DSS Player Pro R5 applications.

### 3.2.1 Support FTP server

R5.0.10 supports some SSH servers:

Product name	Versions
OpenSSH (for Linux)	2.3.0 or later (2.3.0 was released in late 2000)
freeFTPd	

### 3.2.2 SSH support version

Both **SSH 1 and 2 are supported**

### 3.2.3 SFTP support version

SFTP v6 and all earlier versions.

Note : SFTP v6 is the latest version to date.

### 3.2.4 SSH authentication method

LoginID/Password style

Note : Does **NOT** support public key authentication.

### 3.2.5 Options

There is not Active/Passive mode in SFTP itself.

Therefore, "Passive mode" checkbox is disabled when you select "SFTP" in Protocol combo box.

The screenshot shows a configuration window for SFTP. Under "Server information", the "Protocol" dropdown is set to "SFTP". The "Address" field is empty. The "Port" is set to "22" and there is a "Standard" button next to it. Under "Detailed Settings", there are two checkboxes, both of which are disabled (greyed out): "Passive mode" and "After downloading document files, delete acquired files from Document files folder".

### ◆3.3 Support FTPS protocol

FTPS (FTP over SSL/TLS) have two connection mode, called Implicit and Explicit mode.

In R5.0.9 or earlier version, both of modes were supported and inherently selected by specifying the Port number setting. When you set default port number, “Explicit” mode is selected as the connection mode. When no port number is set, “Implicit” mode is selected.

This connection method is similar to MS Outlook style which used in email configuration. However, it is more common in FTP client software to specify connection method and enter the port number manually. For that reason, R5.0.10 FTP function has been improved to allow the user to set manually those connection modes.

### ◆3.4 Initial values

This section describes the initial values of “Server Information”.

As mentioned above, the way to select FTPS connection mode has been modified in R5.0.10.

Therefore, the default setting of each FTP site is different depending on the type of protocol selected.

#### 3.4.1 【DM/TM】 or 【SCP】user profile FTP function in R5.0.10

When you create new FTP site, the initial default values will be:

Item	Value	Description
Protocol	FTP	
Address		Blank
Port	21	The default value of “FTP” port

#### 3.4.2 【DM/TM】or 【SCP】migration of existing FTP settings to R5.0.10

When you update R5 from earlier version to R5.0.10, The existing FTP settings will be migrated to R5.0.10 as follows:

##### ① If “The server needs secured connection (SSL)” is checked, and port number is default(990)

Item	Value	Description
Protocol	<b>FTPS(over Explicit SSL)</b>	
Address	No changes	No changes from previous version
Port		

##### ② “The server needs secured connection (SSL)” is checked, but port number is **NOT** default(990)

Item	Value	Description
Protocol	<b>FTPS(over Implicit SSL)</b>	
Address	No changes	No changes from previous version
Port		

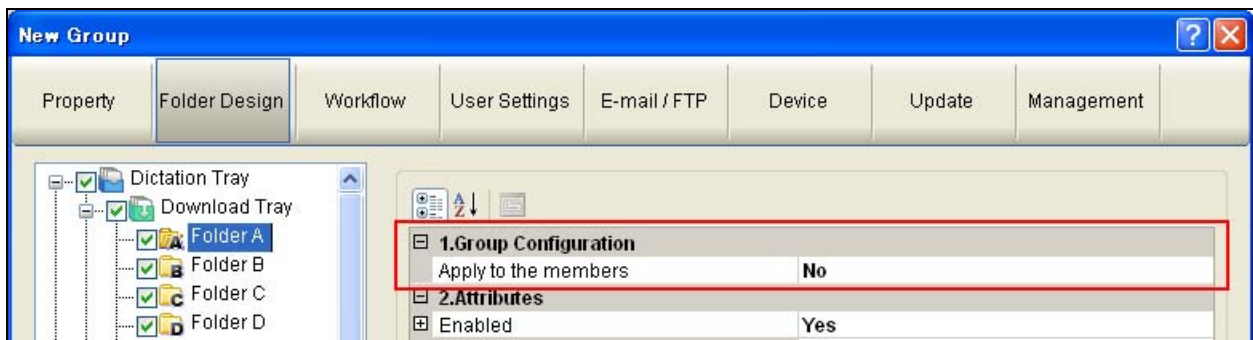
##### ③ If “The server needs secured connection (SSL)” is **NOT** selected

Item	Value	Description
Protocol	<b>FTP</b>	
Address	No changes	No changes from previous version
Port		

## ■ 4 Improvement of Folder customization in group profile

In R5.0.9 SCP, the group profile settings and configurations apply to all the group members. Anytime a change is made to the group profile configuration, all the group profile settings will be inherited by all the group members including the Download Tray folder settings.

While group profile modifications can be a great tool to apply modifications to all group members profile settings at one time, the Download Tray folders settings is not typically shared between users who belong to the same group. For that reason, the design of the group concept has been altered in R5.0.10 to provide the manager the choice to make the Download Tray folders settings of the group apply to the members or not selectively. R5.0.10 SCP group profile newly added option, “Apply to the members”, can be used to control or specify if the folder settings in the group profile should apply to all member’s profiles of the group. The new option can be set individually on any folder including but not limited to the Download Tray folders.



### ■ [Yes] :

Apply group profile folder settings to all group members’ profiles.

### ■ [No] :

Do NOT apply group profile folder settings to all group members’ profiles.

※The default value of group profile folders settings is “No”.

## ■ 5 Improvement of group profile configuration update in SCP

In R5.0.9 or earlier version, when you change some options/settings in the group profile and save the profile, all settings in the group profile, not only the changed ones, will be inherited by all the members of the group regardless whether the setting was modified during the current session or not. This has led to some confusion as some settings customized by the user will reset to the value of that group profile setting indirectly by the manager while updating unrelated settings. For that reason, R5.0.10 SCP is improved to apply modified options in the group profile only to the group members at that time. All other unchanged settings during the session will not be updated to the individual profiles of the group members.

## ■ 6 Improvement of Device Customization in SCP

### ◆6.1 Overview

In Workgroup system, when a manager intends to update DVRs option configurations automatically using SCP, a manager has to make the change in the Device options and then lock the settings to guarantee that the change will update on the end user recorder when it is connected to the PC. Unlocked options do not get updated automatically. In R5.0.10, we improved SCP and DM handling of device configuration changes by updating the setting on the recorder regardless of their lock/unlock status.

### ◆6.2 Concept

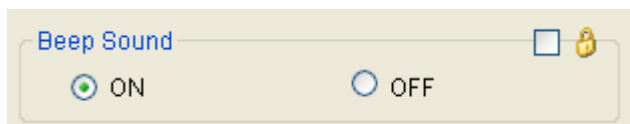
In Workgroup system configuration, when a user connects DVRs to his or her PCs, all modified device options since last update will be transferred to the recorder automatically upon connection.

For example, if a manager changes the user profile device option “Beep Sound” from OFF to ON using SCP, the modification will be updated on the recorder by the Dictation Module next time the recorder is connected to the user PC regardless whether the option was locked/unlocked status. The modified setting is uploaded to the recorder one time only. So the second time the user connect the recorder again to the PC, the previously pushed setting will not be update again. In contrast, if the user changes unlocked options in his Dictation Module, those options won’t be updated to the recorder automatically. The user must select to update the recorder settings manually by clicking the [Update] button in the Device Option dialog.

### ◆6.3 Detailed behavior

#### 6.3.1 Relation with locking option

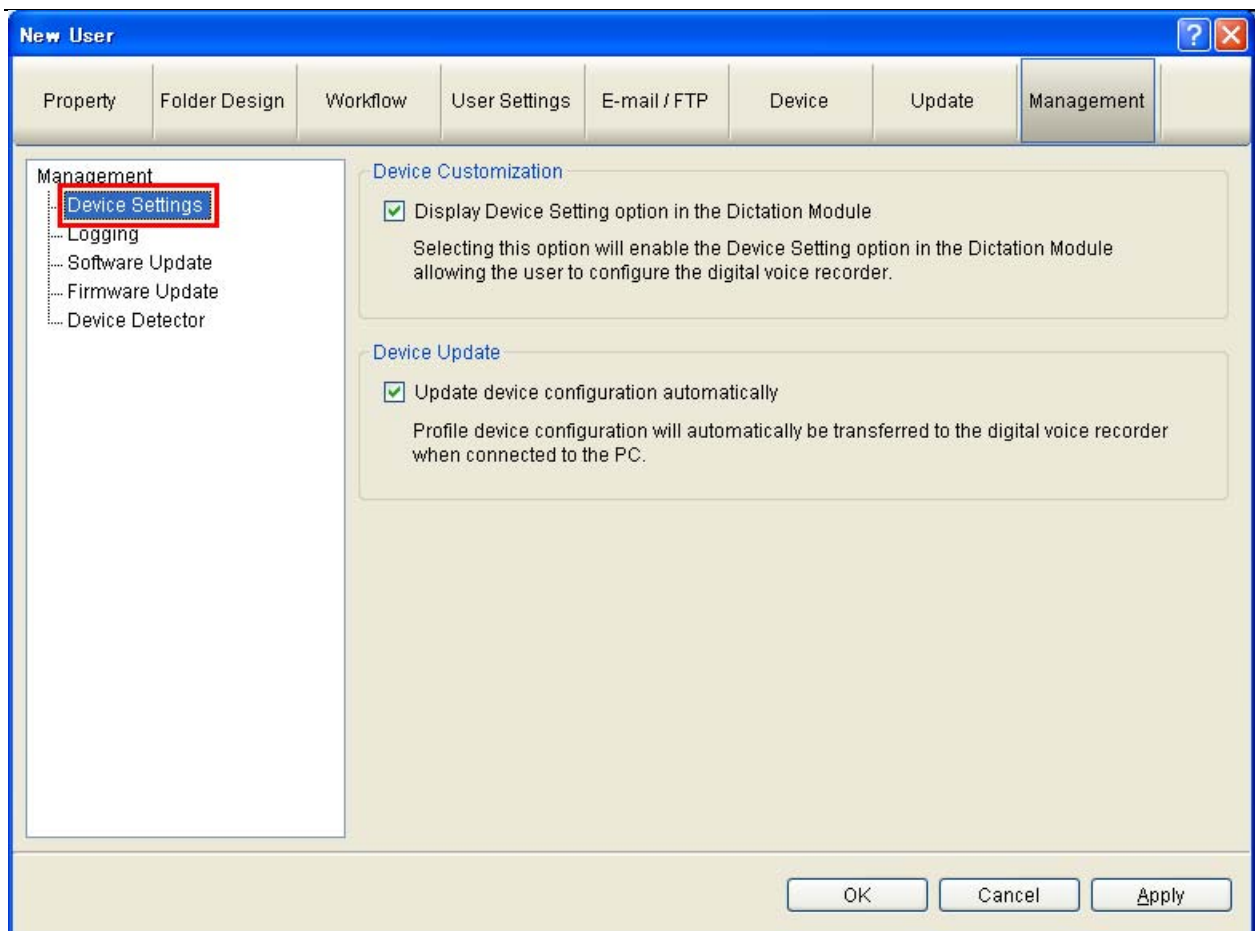
As explained above, user profile changes using SCP will be update to the DVR regardless of the modified option lock/unlock status. However, when you lock a setting after modification, both the locking and the selection will be updated with the intent of the manager to prevent the user from changing the setting again.



Moreover, if a manager change user profile setting but did not lock those settings, the changes will be update on the recorder next time it is connected to the user PC but the user can easily change the setting again using the Dictation Module.

### ◆6.4 Device Settings improvement

In R5.0.9 SCP DM user profile, the Device Settings option was previously called “Permission” under the Management tab. The name description has been changed for better representation of the function and the function split into 2 separate options for more flexibility and control.

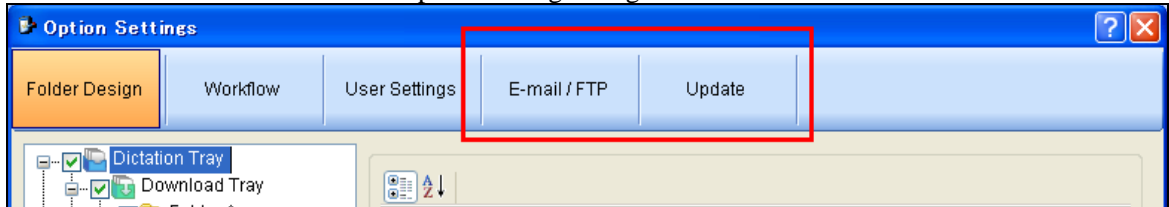


➤ Device Customization

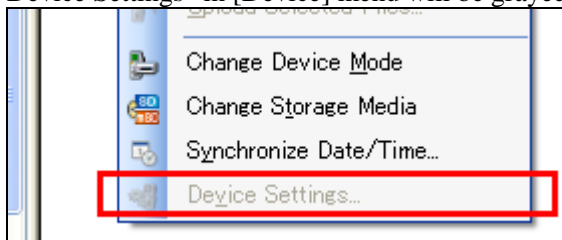
The first option, Device Customization, will enable the manager to control the user ability to change device options using his Dictation Module.

When this option is unchecked in the SCP user profile, the user will not have access to the “Device” configuration screen in the DM Option Settings.

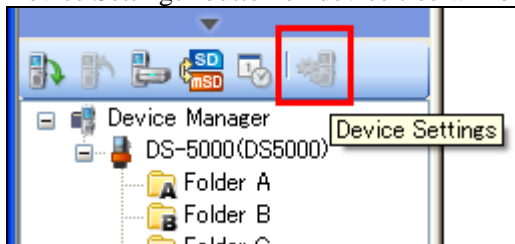
- “Device” tab will be removed from Option Setting dialog



- “Device Settings” in [Device] menu will be grayed out even when you connect DVRs



- “Device Settings” button on device tree will be grayed out.



## ➤ Device Update

The Device Update option specify device settings which are customized on SCP will be transferred automatically when the DVR will be connected to client PC next time.

- ① All locked Options (Every time device is connected)
- ② Modified device options. These are transferred only when DVRs are connected to the PC first time after modified settings on SCP(Regardless of Lock/Unlock status)

The table below shows that the scenario to transfer device customization after modifying device options on SCP.

**[Device Update] = Checked**

Locked Status	Modify Status	Device connection to DM after customization on SCP	
		1st Time	2nd Time or later
Locked	Modify	○	○
	Not	○	○
Unlocked	Modify	○	×
	Not	×	×

**[Device Update] = Unchecked**

Locked Status	Modify Status	Device connection to DM after customization on SCP	
		1st Time	2nd Time or later
Locked	Modify	×	×
	Not	×	×
Unlocked	Modify	×	×
	Not	×	×

○ : Transferred / × : Not Transferred

## ■ 7 License Manager Language Selection

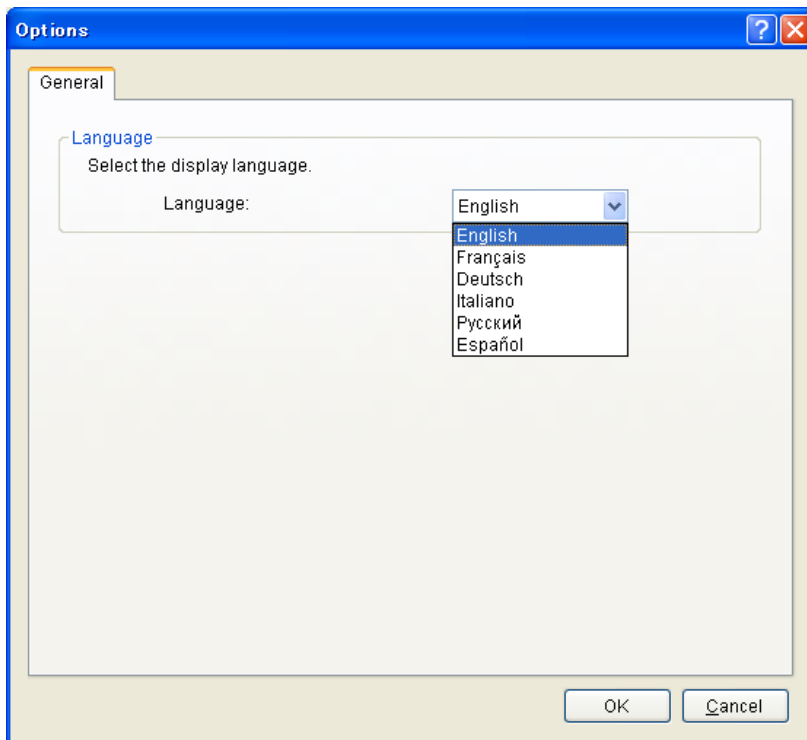
License Manager is improved to be able to select the display language in option setting.

[Options] menu is added in [File] menu as shown below.



[Options] dialog has the language selection list.

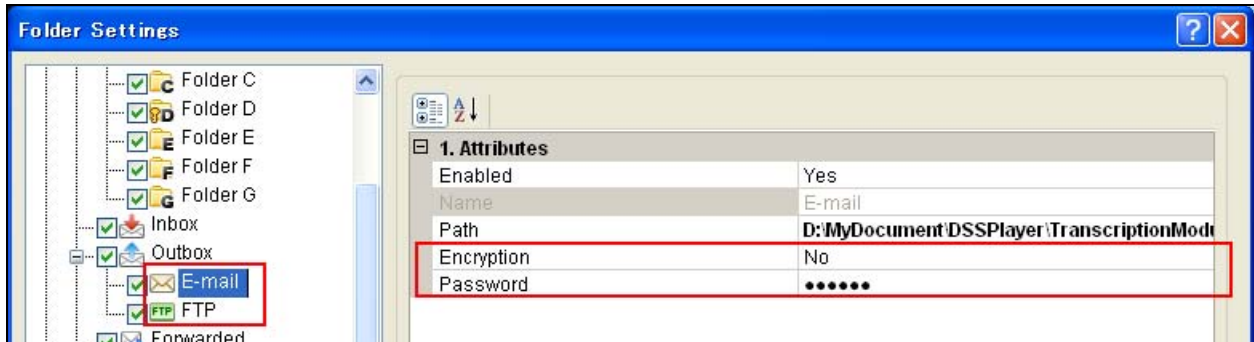
When you select the language and restart LM, the display language will be changed.



## ■ 8 Encryption Support for TM Email/FTP Forward function

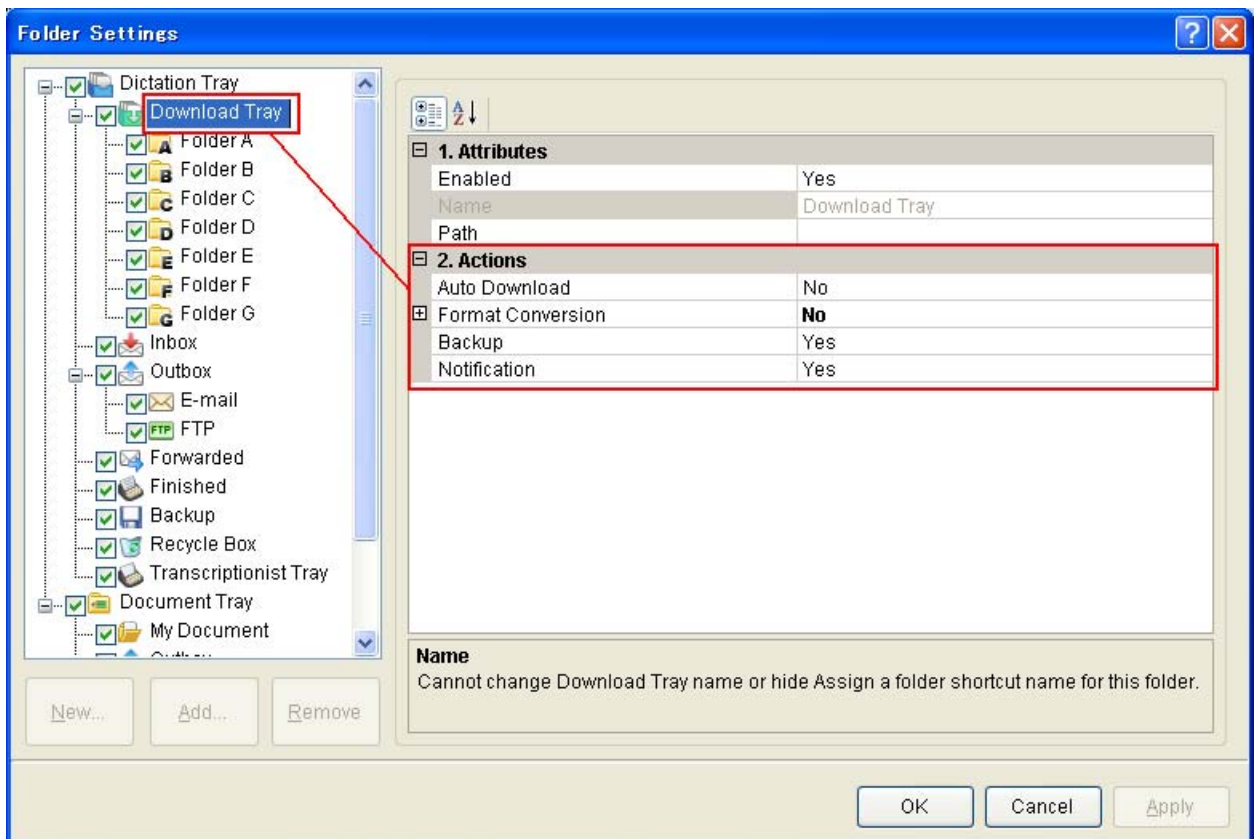
In R5.0.9 TM or earlier versions, you can encrypt documentations when you send them but you cannot encrypt audio file when you forward to another transcriptionist.

In R5.0.10, you can encrypt sound files when forwarding via Email or FTP in the TM.



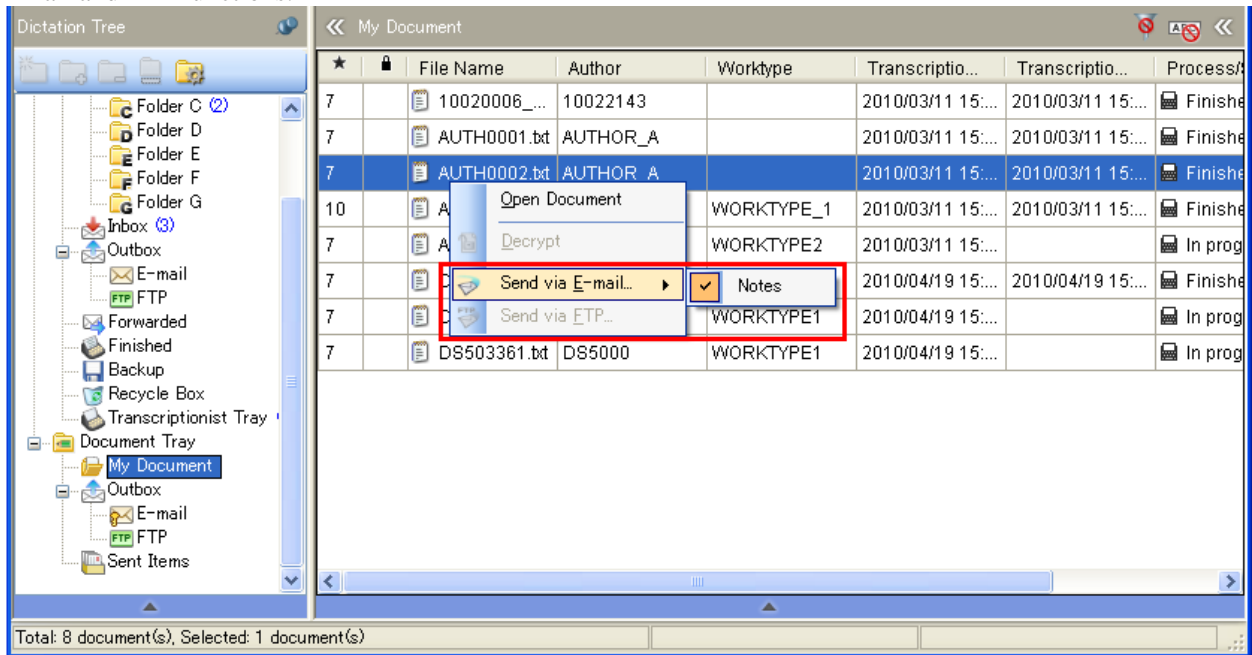
## ■ 9 Remove “Clean” option from “Download Tray” of TM

“Clean” option is removed from “Download Tray” because it was not intended to be supported in Transcription module.



## 10 TM “Document Tray” Email/FTP Function Support

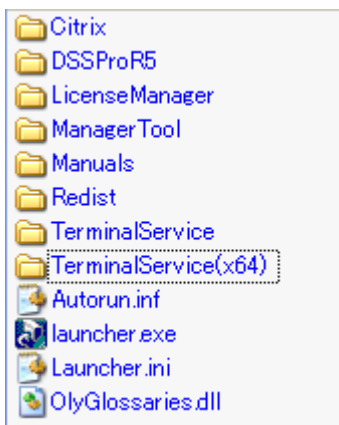
As shown in the screen shot below, the TM “Document Tray” context menu have been modified to support Email and FTP functions.



## 11 64bit Terminal Service Support

The new 64bit Terminal Service Virtual Driver has been added to support those customer who use R5 software in Terminal Service environment using 64bit client PCs (x64)..

The image below shows the newly added 64bit Terminal Service driver on the DSS Player Pro R5.0.10 CD. For 32bit client PC, please continue to use the Terminal Service driver found in the “TerminalService” folder.



The new 64bit Terminal Service driver can NOT be installed on a 32bit PC. Also, it will not install on a PC that has any DSS Player software installed.

## ■ 12 Added “Cancel” Function to [Outbox]-[Email]/[FTP] Context Menu

Please see the screen shot below.

In R5.0.10, [Cancel] function has been added to the [Outbox] – [Email] / [FTP] context menu. In R5.0.9 or earlier versions, only the delete function was available which meant the message and the audio file will be actually deleted without the option to cancel sending the audio. Using the [Cancel] function instead of [Delete] will stop the process of sending the audio file and return it to the source folder.

