

SUBJECT	DS4000 Firmware Update Version 1.13 Installation Instruction	06.20.2006
OLD DS4000 V1.12 or Earlier		NEW DS4000 V1.13
<p><u>Purpose:</u> This firmware will fix intermittent problem(s) that has been experienced by some customers. Please read the Installation Instruction in this document carefully.</p> <p>Who should use this firmware update? If your DS-4000 has firmware version 1.12 or earlier If you DS-4000 serial number is less than <u>282241</u></p> <p>How can I check my DS-4000 recorder firmware version? To check the firmware version on your recorder, follow the steps below: 1. Turn OFF the recorder and remove the xD card. 2. Turn ON the recorder 3. Press and hold the A and B buttons simultaneously for few seconds until the recorder flashes the firmware version on the LCD.</p> <p>If the firmware version of your recorder is 1.12 or less, you need to follow the procedure below to install firmware version 1.13 on your DS-4000 recorder.</p> <p>DS-4000 Firmware v1.13 List of Bug Fixes/Improvements:</p> <ul style="list-style-type: none">• Improve DS-4000 ability to detect and charge a discharged battery pack.• Improve DS-4000 recording response after a Power Save or Power OFF.• Improve Job Number assignment process. <p>General Precautions: Read the following precautions before starting to update firmware. *This program is only for use with the DS-4000. *This program runs on Windows 2000 or Windows XP *Never turn off power to the computer while the firmware update program is running, or a malfunction may ensue. *We recommend using an AC power adapter when conducting the update on a notebook computer. *Never turn off power on the DS-4000 or remove from the USB cable during the firmware update.</p>		

Firmware Update Installation Instruction:

System Requirements:

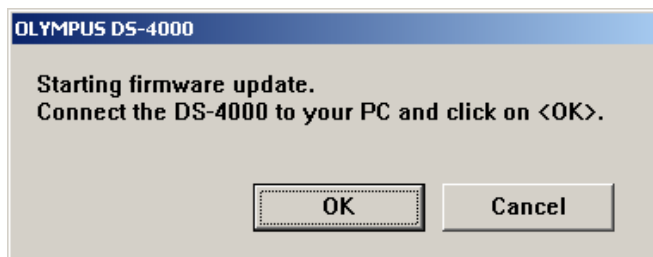
1. Your PC must be running Windows 2000 or Windows XP.
2. Your PC must meet the minimum requirement as indicated in the DSS Player Pro manual.
Check the manual for details.
3. The DSS Player Pro R4 must be installed on the PC.

Before you start:

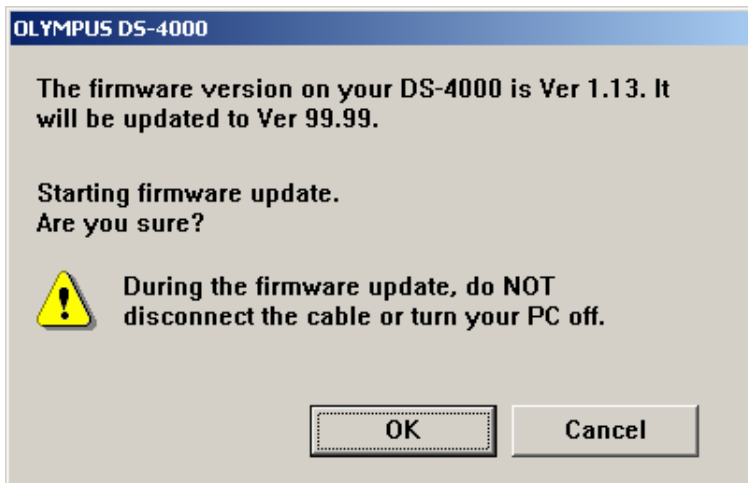
1. Close all running applications on your PC including any Olympus DSS Player program.
2. Shutdown the Olympus Device Detector program running in the system tray.

Starting Firmware Update:

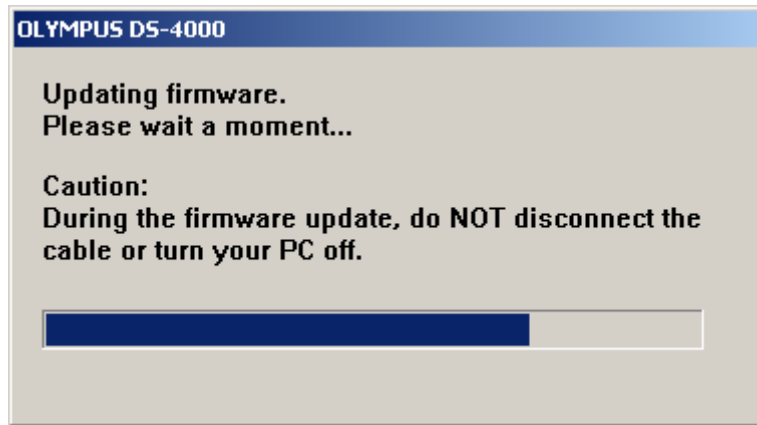
1. Connect the DS-4000 to the PC via the USB cable, before you switch the recorder ON.
The DS-4000 LCD will display the message "Remote".
2. Unzip the zipped file **DS4000_FWUpdate_V113.zip** into a temporary folder on your PC.
3. Double-click the **DS4000_FWUpdate_V113.exe**. The dialog box below will pop up, click OK.



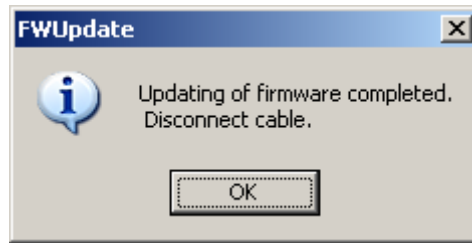
3. The confirmation dialog box shown below will confirm the current firmware version on your recorder. The current DS-4000 firmware version indicated should be 1.12 or less. The new firmware version number indicated in this box, 99.99 should be ignored.
4. Click OK to start the firmware up date.



4. While the process of updating the firmware is taking place, the DS-4000 LCD will display “PROGRAM UPDATING...” DO NOT interrupt the process.



5. When the following dialog box is displayed and the DS-4000 LCD indicates “UPDATE SUCCESS.”, the process is complete. Click OK, and then disconnect the DS-4000 from the PC.



6. Verify that the DS-4000 firmware has been updated by checking the firmware version as described above.